



12423 NE Whitaker Way
Portland, OR 97230
503-254-1794



Report Number: 22-010580/D002.R000
Report Date: 09/13/2022
ORELAP#: OR100028
Purchase Order:
Received: 09/06/22 13:15

Customer: IHC LLC
Product identity: Live D8 - FV
Client/Metric ID: .
Laboratory ID: 22-010580-0001

Summary

Terpenes:

Analyte	Percent by weight	Percent of Total	Analyte	Percent by weight	Percent of Total
β -Myrcene	2.32	46.49%	trans- β -Ocimene	0.779	15.61%
(R)-(+)-Limonene	0.491	9.84%	p-Cymene	0.292	5.85%
β -Caryophyllene	0.264	5.29%	α -pinene	0.236	4.73%
farnesene	0.172	3.45%	Humulene	0.128	2.57%
(-)- β -Pinene	0.0870	1.74%	α -Bisabolol	0.0665	1.33%
Terpinolene	0.0609	1.22%	cis- β -Ocimene	0.0362	0.73%
Linalool	0.0336	0.67%	(-)-caryophyllene oxide	0.0261	0.52%
Total Terpenes	4.99	100.00%			



12423 NE Whitaker Way
Portland, OR 97230
503-254-1794



Report Number: 22-010580/D002.R000
Report Date: 09/13/2022
ORELAP#: OR100028
Purchase Order:
Received: 09/06/22 13:15

Customer: IHC LLC
825 NW 16th Ave
Portland Oregon 97209
United States of America (USA)

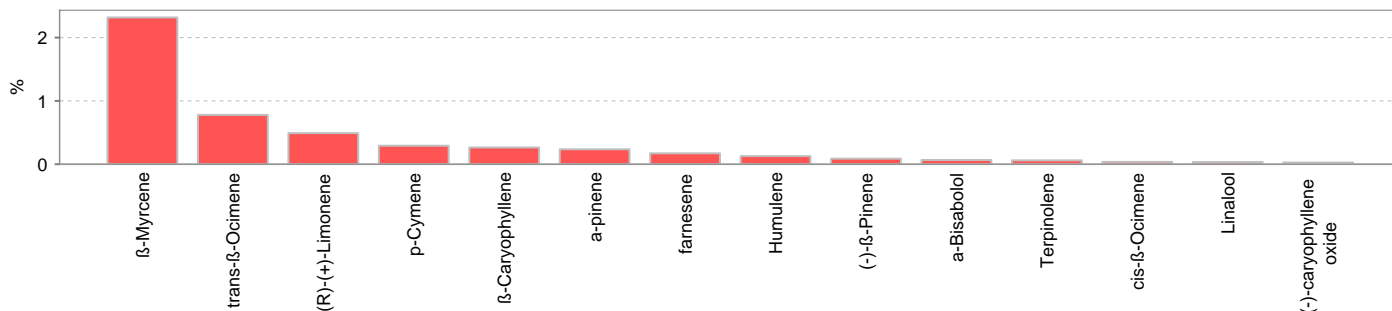
Product identity: Live D8 - FV
Client/Metric ID: .
Sample Date:
Laboratory ID: 22-010580-0001
Evidence of Cooling: No
Temp: 7.4 °C
Relinquished by: Giuffrida



Sample Results



Terpenes				Method: J AOAC 2015 V98-6	Units %	Batch 2207586	Analyze 09/08/22 01:41 AM		
Analyte	Result	LOQ	% of Total	Notes	Analyte	Result	LOQ	% of Total	Notes
β-Myrcene	2.32	0.019	46.49%		trans-β-Ocimene	0.779	0.012	15.611%	
(R)-(+)-Limonene	0.491	0.019	9.840%		p-Cymene	0.292	0.019	5.852%	
β-Caryophyllene	0.264	0.019	5.291%		α-pinene	0.236	0.019	4.729%	
farnesene	0.172	0.019	3.447%		Humulene	0.128	0.019	2.565%	
(-)-β-Pinene	0.0870	0.019	1.7435%		α-Bisabolol	0.0665	0.019	1.3327%	
Terpinolene	0.0609	0.019	1.2204%		cis-β-Ocimene	0.0362	0.006	0.7255%	
Linalool	0.0336	0.019	0.6733%		(-)-caryophyllene oxide	0.0261	0.019	0.5230%	
(-)-Guaiol	< LOQ	0.019	0.00%		(+)-fenchol	< LOQ	0.019	0.00%	
α-Terpinene	< LOQ	0.019	0.00%		(+)-Cedrol	< LOQ	0.019	0.00%	
nerol	< LOQ	0.019	0.00%		(-)-α-Terpineol	< LOQ	0.019	0.00%	
Camphene	< LOQ	0.019	0.00%		α-phellandrene	< LOQ	0.019	0.00%	
Geraniol	< LOQ	0.019	0.00%		(±)-trans-Nerolidol	< LOQ	0.019	0.00%	
(-)-Isopulegol	< LOQ	0.019	0.00%		Geranyl acetate	< LOQ	0.019	0.00%	
(±)-Camphor	< LOQ	0.019	0.00%		α-cedrene	< LOQ	0.019	0.00%	
Menthol	< LOQ	0.019	0.00%		Isoborneol	< LOQ	0.019	0.00%	
(±)-cis-Nerolidol	< LOQ	0.019	0.00%		Eucalyptol	< LOQ	0.019	0.00%	
(+)-Pulegone	< LOQ	0.019	0.00%		γ-Terpinene	< LOQ	0.019	0.00%	
(+)-Borneol	< LOQ	0.019	0.00%		Sabinene hydrate	< LOQ	0.019	0.00%	
d-3-Carene	< LOQ	0.019	0.00%		(±)-fenchone	< LOQ	0.019	0.00%	
Sabinene	< LOQ	0.019	0.00%		valencene	< LOQ	0.019	0.00%	
Total Terpenes	4.99								





12423 NE Whitaker Way
Portland, OR 97230
503-254-1794



Report Number: 22-010580/D002.R000
Report Date: 09/13/2022
ORELAP#: OR100028
Purchase Order:
Received: 09/06/22 13:15

These test results are representative of the individual sample selected and submitted by the client.

Abbreviations

Limits: Action Levels per OAR-333-007-0400, OAR-333-007-0210, OAR-333-007-0220, CCR title 16-division 42. BCC-section 5723

Limit(s) of Quantitation (LOQ): The minimum levels, concentrations, or quantities of a target variable (e.g., target analyte) that can be reported with a specified degree of confidence.

Units of Measure

% = Percentage of sample

% wt = $\mu\text{g/g}$ divided by 10,000

Approved Signatory

Derrick Tanner
General Manager



12423 NE Whitaker Way
Portland, OR 97230
503-254-1794

Report Number: 22-010580/D002.R000
Report Date: 09/13/2022
ORELAP#: OR100028
Purchase Order:
Received: 09/06/22 13:15



Hemp / Cannabis Usable / Extract / Finished Products
Chain of Custody Record

Revision: 4.00 Control#: CPO23 Rev 02/24/2021 Eff: 03/04/2021
ORELAP ID: OR300028

Company: The Hemp Collect Contact: kyle@thehempcollect.com Street: 431 NW Flinders st. City: Portland State: OR Zip: 97209 <input checked="" type="checkbox"/> Email Results: dropbox (IHL) Fx: (01) 605104 Fx Results: () Billing of different: joel@thehempcollect.com				Analysis Requested										PO Number: _____ Project Number: _____ Project Name: _____ Custom Reporting: _____ Report to State: <input type="checkbox"/> METRC or <input type="checkbox"/> Other: _____ Turnaround time: <input checked="" type="checkbox"/> 3 Business Day Standard Turnaround <input type="checkbox"/> 3 Business Day Rush Turnaround* <input type="checkbox"/> 2 Business Day Rush Turnaround* <small>*Check for availability</small>			
Lab ID	Client Sample Identification	Date	Time	Particles - OR 59 (required)	Pesticide Multi-Residue - 375 compounds	Potency	Individual Solvents	Moisture & Water Activity	Terpenes	Molds: Yeast and Mould	Molds: Total and Total Coliform	Heavy Metals	Mycotoxins	Drift:	Sample Type 1	Weight (units)	Comments/Memo ID
1	Live D8 - FV							X							C		Alternate Client name: ATLH
2	Live D8 - Llama							X							C		
3	Live D8 - OG							X							C		
4	Live D8 - PB							X							C		
5	D8 - SSC_HT							X							C		
6	D8 - FF_BT							X							C		
7																	
8																	
9																	
10																	
Released by:		Date:	Time:	Received by:		Date:	Time:	Lab Use Only:									
Kyle Farook		9/6	12:30	[Signature]		9/6/22	12:18	<input type="checkbox"/> Shipped Via: _____ or <input type="checkbox"/> Client drop Evidence of cooling: <input type="checkbox"/> Yes <input type="checkbox"/> No - Temp (C): 7.4 Sample in good condition: <input type="checkbox"/> Yes <input type="checkbox"/> No <input type="checkbox"/> Cash <input type="checkbox"/> Check <input type="checkbox"/> CC <input type="checkbox"/> Net: _____ Prekg storage: _____									
[Signature]		9/6/22	12:40	AR		9/6/22	13:35										

* - Sample Type Codes: Vegetation (V) ; Isolates (I) ; Extract/Concentrate (C) ; Tincture/Topical (T) ; Edible (E) ; Beverage (B)

Sample received by Columbia Laboratories with testing requirements constitutes an agreement for services in accordance with the current terms of service associated with this CCR. By signing "Released by" you are agreeing to these terms.
12423 NE Whitaker Way Portland, OR 97230 P: (503) 254-1794 / Fax: (503) 254-2432 Page _____ of _____
www.columbialaboratories.com



12423 NE Whitaker Way
 Portland, OR 97230
 503-254-1794



Report Number: 22-010580/D002.R000
Report Date: 09/13/2022
ORELAP#: OR100028
Purchase Order:
Received: 09/06/22 13:15

Revision: 1 Document ID: 7086
 Legacy ID: CFL-E57Worksheet Validated 11/04/2020

Terpenes Quality Control Results

Method Reference: EPA 5035				Batch ID: 2207586					
Method Blank				Laboratory Control Sample					
Analyte	Result	LOQ	Notes	Result	LCS	Units	LCS % Rec	Limits	Notes
a-pinene	<LOQ	< 200		500	500	µg/g	100%	70 - 130	
Camphene	<LOQ	< 200		506	500	µg/g	101%	70 - 130	
Sabinene	<LOQ	< 200		502	500	µg/g	100%	70 - 130	
b-Pinene	<LOQ	< 200		508	500	µg/g	102%	70 - 130	
b-Myrcene	<LOQ	< 200		524	500	µg/g	105%	70 - 130	
a-phellandrene	<LOQ	< 200		544	500	µg/g	109%	70 - 130	
d-3-Carene	<LOQ	< 200		535	500	µg/g	107%	70 - 130	
a-Terpinene	<LOQ	< 200		502	500	µg/g	100%	70 - 130	
p-Cymene	<LOQ	< 200		540	500	µg/g	108%	70 - 130	
D-Limonene	<LOQ	< 200		498	500	µg/g	100%	70 - 130	
Eucalyptol	<LOQ	< 200		505	500	µg/g	101%	70 - 130	
b-cis-Ocimene	<LOQ	< 67		173	167	µg/g	104%	70 - 130	
b-trans-Ocimene	<LOQ	< 133		364	333	µg/g	109%	70 - 130	
g-Terpinene	<LOQ	< 200		503	500	µg/g	101%	70 - 130	
Sabinene_Hydrate	<LOQ	< 200		502	500	µg/g	100%	70 - 130	
Terpinolene	<LOQ	< 200		515	500	µg/g	103%	70 - 130	
D-Fenchone	<LOQ	< 200		476	500	µg/g	95%	70 - 130	
Linalool	<LOQ	< 200		620	500	µg/g	124%	70 - 130	
Fenchol	<LOQ	< 200		526	500	µg/g	105%	70 - 130	
Camphor	<LOQ	< 200		516	500	µg/g	103%	70 - 130	
Isopulego	<LOQ	< 200		559	500	µg/g	112%	70 - 130	
Isoborneol	<LOQ	< 200		535	500	µg/g	107%	70 - 130	
Borneol	<LOQ	< 200		523	500	µg/g	105%	70 - 130	
DL-Menthol	<LOQ	< 200		515	500	µg/g	103%	70 - 130	
Terpineol	<LOQ	< 200		528	500	µg/g	106%	70 - 130	
Nerol	<LOQ	< 200		544	500	µg/g	109%	70 - 130	
Pulegone	<LOQ	< 200		550	500	µg/g	110%	70 - 130	
Geraniol	<LOQ	< 200		565	500	µg/g	113%	70 - 130	
Geranyl_Acetate	<LOQ	< 200		535	500	µg/g	107%	70 - 130	
a-Cedrene	<LOQ	< 200		499	500	µg/g	100%	70 - 130	
b-Caryophyllene	<LOQ	< 200		529	500	µg/g	106%	70 - 130	
a-Humulene	<LOQ	< 200		558	500	µg/g	112%	70 - 130	
Valenene	<LOQ	< 200		516	500	µg/g	103%	70 - 130	
cis-Nerolidol	<LOQ	< 200		572	500	µg/g	114%	70 - 130	
a-Farnesene	<LOQ	< 200		542	500	µg/g	108%	70 - 130	
trans-Nerolidol	<LOQ	< 200		526	500	µg/g	105%	70 - 130	
Caryophyllene_Oxide	<LOQ	< 200		524	500	µg/g	105%	70 - 130	
Guaiol	<LOQ	< 200		546	500	µg/g	109%	70 - 130	
Cedrol	<LOQ	< 200		561	500	µg/g	112%	70 - 130	
a-Bisabolol	<LOQ	< 200		631	500	µg/g	126%	70 - 130	

Definitions

LOQ	Limit of Quantitation
LCS	Laboratory Control Sample
% REC	Percent Recovery



12423 NE Whitaker Way
 Portland, OR 97230
 503-254-1794



Report Number: 22-010580/D002.R000
Report Date: 09/13/2022
ORELAP#: OR100028
Purchase Order:
Received: 09/06/22 13:15

Revision: 1 Document ID: 7086
 Legacy ID: CFL-E57Worksheet Validated 11/04/2020

Terpenes Quality Control Results

Method Reference: EPA 5035		Batch ID: 2207586					
Sample/Sample Duplicate		Sample ID: 22-010450-0001					
Analyte	Result	Org. Result	LOQ	Units	% RPD	LIMIT	Notes
a-pinene	37700	37700	197	µg/g	0%	< 20	
Camphene	1590	1590	197	µg/g	0%	< 20	
Sabinene	1500	1510	197	µg/g	1%	< 20	
b-Pinene	19400	19300	197	µg/g	1%	< 20	
b-Myrcene	122000	122000	197	µg/g	0%	< 20	
a-phellandrene	<LOQ	<LOQ	197	µg/g	0%	< 20	
d-3-Carene	208	213	197	µg/g	2%	< 20	
a-Terpinene	1530	1530	197	µg/g	0%	< 20	
p-Cymene	676	667	197	µg/g	1%	< 20	
D-Limonene	61600	61400	197	µg/g	0%	< 20	
Eucalyptol	4460	4450	197	µg/g	0%	< 20	
b-cis-Ocimene	<LOQ	<LOQ	65.7	µg/g	0%	< 20	
b-trans-Ocimene	<LOQ	<LOQ	131	µg/g	0%	< 20	
g-Terpinene	1060	1070	197	µg/g	1%	< 20	
Sabinene_Hydrate	<LOQ	<LOQ	197	µg/g	0%	< 20	
Terpinolene	9850	9820	197	µg/g	0%	< 20	
D-Fenchone	<LOQ	<LOQ	197	µg/g	0%	< 20	
Linalool	67900	67900	197	µg/g	0%	< 20	
Fenchol	26100	26100	197	µg/g	0%	< 20	
Camphor	474	470	197	µg/g	1%	< 20	
Isopulego	<LOQ	<LOQ	197	µg/g	0%	< 20	
Isoborneol	<LOQ	<LOQ	197	µg/g	0%	< 20	
Borneol	7520	7510	197	µg/g	0%	< 20	
DL-Menthol	<LOQ	<LOQ	197	µg/g	0%	< 20	
Terpineol	19700	19700	197	µg/g	0%	< 20	
Nerol	<LOQ	<LOQ	197	µg/g	0%	< 20	
Pulegone	<LOQ	<LOQ	197	µg/g	0%	< 20	
Geraniol	892	878	197	µg/g	2%	< 20	
Geranyl_Acetate	<LOQ	<LOQ	197	µg/g	0%	< 20	
a-Cedrene	<LOQ	<LOQ	197	µg/g	0%	< 20	
b-Caryophyllene	244000	243000	197	µg/g	0%	< 20	
a-Humulene	238000	237000	197	µg/g	0%	< 20	
Valenene	20300	20200	197	µg/g	0%	< 20	
cis-Nerolidol	<LOQ	<LOQ	197	µg/g	0%	< 20	
a-Farnesene	<LOQ	<LOQ	197	µg/g	0%	< 20	
trans-Nerolidol	38000	38000	197	µg/g	0%	< 20	
Caryophyllene_Oxide	30100	30100	197	µg/g	0%	< 20	
Guaiaol	<LOQ	<LOQ	197	µg/g	0%	< 20	
Cedrol	<LOQ	<LOQ	197	µg/g	0%	< 20	
a-Bisabolol	27300	27200	197	µg/g	0%	< 20	

Definitions

RPD Relative Percent Difference



12423 NE Whitaker Way
Portland, OR 97230
503-254-1794



Report Number: 22-010580/D002.R000
Report Date: 09/13/2022
ORELAP#: OR100028
Purchase Order:
Received: 09/06/22 13:15





Explanation of QC Flag Comments:

Code	Explanation
Q	Matrix interferences affecting spike or surrogate recoveries.
Q1	Quality control result biased high. Only non-detect samples reported.
Q2	Quality control outside QC limits. Data considered estimate.
Q3	Sample concentration greater than four times the amount spiked.
Q4	Non-homogenous sample matrix, affecting RPD result and/or % recoveries.
Q5	Spike results above calibration curve.
Q6	Quality control outside QC limits. Data acceptable based on remaining QC.
R	Relative percent difference (RPD) outside control limit.
R1	RPD non-calculable, as sample or duplicate results are less than five times the LOQ.
R2	Sample replicates RPD non-calculable, as only one replicate is within the analytical range.
LOQ1	Quantitation level raised due to low sample volume and/or dilution.
LOQ2	Quantitation level raised due to matrix interference.
B	Analyte detected in method blank, but not in associated samples.
B1	The sample concentration is greater than 5 times the blank concentration.
B2	The sample concentration is less than 5 times the blank concentration.



12423 NE Whitaker Way
 Portland, OR 97230
 503-254-1794



Report Number: 23-000690/D018.R000
Report Date: 01/24/2023
ORELAP#: OR100028
Purchase Order:
Received: 01/17/23 14:16

Customer: IHC LLC
Product identity: 01LIR209_FV
Client/Metric ID: .
Laboratory ID: 23-000690-0003

Summary

Potency:

Analyte	Result (%)			
CBD-A	41.3			
CBDV-A	26.1			
CBC-A	2.89			
CBD	2.30			
CBDV	1.52			
THC-A	1.18			
THCV-A	0.994			
CBG-A	0.766			
Δ9-THC	0.293			
CBC	0.264			
CBG	0.198			
			CBD-Total	38.5%
			THC-Total	1.33%
(Reported in percent of total sample)				

Residual Solvents:

Analyte	Result (µg/g)	Limits (µg/g)	Status
n-Butane	539		
Butanes (sum)	539	5000	pass

Pesticides:

Analyte	Result (mg/kg)	Limits (mg/kg)	Status
Multi-Residue Pesticide Profile	< LOQ for all analytes		

Metals:

Less than LOQ for all analytes.



12423 NE Whitaker Way
 Portland, OR 97230
 503-254-1794



Report Number: 23-000690/D018.R000
Report Date: 01/24/2023
ORELAP#: OR100028
Purchase Order:
Received: 01/17/23 14:16

Customer: IHC LLC
 825 NW 16th Ave
 Portland Oregon 97209
 United States of America (USA)

Product identity: 01LIR209_FV
Client/Metric ID: .
Sample Date:
Laboratory ID: 23-000690-0003
Evidence of Cooling: No
Temp: 20 °C
Relinquished by: ramos



Sample Results

Potency	Method: J AOAC 2015 V98-6 (mod) ^p			Units %	Batch: 2300599	Analyze: 1/19/23 6:41:00 AM
Analyte	As Received	Dry weight	LOQ	Notes		
CBC	0.264		0.0678			
CBC-A	2.89		0.0678			
CBC-Total	2.80		0.127			
CBD	2.30		0.0678			
CBD-A	41.3		0.678			
CBD-Total	38.5		0.662			
CBDV	1.52		0.0678			
CBDV-A	26.1		0.678			
CBDV-Total	24.1		0.655			
CBE	< LOQ		0.0678			
CBG	0.198		0.0678			
CBG-A	0.766		0.0678			
CBG-Total	0.870		0.126			
CBL	< LOQ		0.0678			
CBL-A	< LOQ		0.0678			
CBL-Total	< LOQ		0.127			
CBN	< LOQ		0.0678			
CBT	< LOQ		0.0678			
Δ10-THC-9R	< LOQ		0.0678			
Δ8-THC	< LOQ		0.0678			
Δ8-THCV	< LOQ		0.0678			
Δ9-THC	0.293		0.0678			
exo-THC	< LOQ		0.0678			
THC-A	1.18		0.0678			
THC-Total	1.33		0.127			
THCV	< LOQ		0.0678			
THCV-A	0.994		0.0678			
THCV-Total	0.873		0.126			
Total Cannabinoids	77.8					



12423 NE Whitaker Way
Portland, OR 97230
503-254-1794



Report Number: 23-000690/D018.R000
Report Date: 01/24/2023
ORELAP#: OR100028
Purchase Order:
Received: 01/17/23 14:16

Solvents											Method: Residual Solvents by GC/MS ^b					Units µg/g		Batch 2300683		Analyze 01/23/23 11:29 AM			
Analyte	Result	Limits	LOQ	Status	Notes	Analyte	Result	Limits	LOQ	Status	Notes												
1,4-Dioxane	< LOQ	380	100	pass		2-Butanol	< LOQ	5000	200	pass													
2-Ethoxyethanol	< LOQ	160	30.0	pass		2-Methylbutane (Isopentane)	< LOQ		200														
2-Methylpentane	< LOQ		30.0			2-Propanol (IPA)	< LOQ	5000	200	pass													
2,2-Dimethylbutane	< LOQ		30.0			2,2-Dimethylpropane (neo-pentane)	< LOQ		200														
2,3-Dimethylbutane	< LOQ		30.0			3-Methylpentane	< LOQ		30.0														
Acetone	< LOQ	5000	200	pass		Acetonitrile	< LOQ	410	100	pass													
Benzene	< LOQ	2.00	1.00	pass		Butanes (sum)	539	5000	400	pass													
Cyclohexane	< LOQ	3880	200	pass		Ethyl acetate	< LOQ	5000	200	pass													
Ethyl benzene	< LOQ		200			Ethyl ether	< LOQ	5000	200	pass													
Ethylene glycol	< LOQ	620	200	pass		Ethylene oxide	< LOQ	50.0	20.0	pass													
Hexanes (sum)	< LOQ	290	150	pass		Isopropyl acetate	< LOQ	5000	200	pass													
Isopropylbenzene (Cumene)	< LOQ	70.0	30.0	pass		m,p-Xylene	< LOQ		200														
Methanol	< LOQ	3000	200	pass		Methylene chloride	< LOQ	600	60.0	pass													
Methylpropane (Isobutane)	< LOQ		200			n-Butane	539		200														
n-Heptane	< LOQ	5000	200	pass		n-Hexane	< LOQ		30.0														
n-Pentane	< LOQ		200			o-Xylene	< LOQ		200														
Pentanes (sum)	< LOQ	5000	600	pass		Propane	< LOQ	5000	200	pass													
Tetrahydrofuran	< LOQ	720	100	pass		Toluene	< LOQ	890	100	pass													
Total Xylenes	< LOQ		400			Total Xylenes and Ethyl benzene	< LOQ	2170	600	pass													

Pesticides											Method: AOAC 2007.01 & EN 15662 (mod) ^b		Units mg/kg		Batch 2300687		Analyze 01/23/23 01:15 PM			
Analyte	Result	Limits	Units	Status	Notes															
Multi-Residue Pesticide Profile	< LOQ for all analytes																			

Metals										
Analyte	Result	Limits	Units	LOQ	Batch	Analyzed Method	Status	Notes		
Arsenic	< LOQ	0.200	mg/kg	0.0906	2300594	01/18/23 AOAC 2013.06 (mod.) ^b	pass			
Cadmium	< LOQ	0.200	mg/kg	0.0906	2300594	01/18/23 AOAC 2013.06 (mod.) ^b	pass			
Lead	< LOQ	0.500	mg/kg	0.0906	2300594	01/18/23 AOAC 2013.06 (mod.) ^b	pass			
Mercury	< LOQ	0.100	mg/kg	0.0453	2300594	01/18/23 AOAC 2013.06 (mod.) ^b	pass			



12423 NE Whitaker Way
Portland, OR 97230
503-254-1794



Report Number: 23-000690/D018.R000
Report Date: 01/24/2023
ORELAP#: OR100028
Purchase Order:
Received: 01/17/23 14:16

Abbreviations

Limits: Action Levels per OAR-333-007-0400, OAR-333-007-0210, OAR-333-007-0220, CCR title 16-division 42. BCC-section 5723

Limit(s) of Quantitation (LOQ): The minimum levels, concentrations, or quantities of a target variable (e.g., target analyte) that can be reported with a specified degree of confidence.

^p = ISO/IEC 17025:2017 accredited method.

Units of Measure

µg/g = Microgram per gram

mg/kg = Milligram per kilogram = parts per million (ppm)

% = Percentage of sample

% wt = µg/g divided by 10,000

Approved Signatory

Derrick Tanner
General Manager



**P2320 Multi-Residue Pesticide Profile
Cannabis**

Analyte	LOQ (mg/kg)
2,4-D	0.1
Abamectin	0.1
Acephate	0.2
Acequinocyl	0.2
Acetamiprid	0.1
Acetochlor	0.2
Acrinathrin	0.1
Alachlor	0.1
Aldicarb	0.1
Aldoxycarb	0.1
Aldrin	0.1
Ametoctradin	0.1
Ametryn	0.1
Anilazine	0.1
Aspon	0.1
Asulam	0.1
Atrazine	0.1
Atrazine-desethyl	0.1
Azinphos-ethyl	0.1
Azinphos-methyl	0.1
Azoxystrobin	0.1
Benalaxyl	0.1
Bendiocarb	0.1
Benoxacor	0.1
Bensulide	0.1
Bentazon	0.1
Bifenazate	0.1
Bifenox	0.1
Bifenthrin	0.1
Binapacryl	0.1
Boscalid	0.1
Bromacil	0.1
Bromophos-ethyl	0.1
Bromopropylate	0.1
Bromoxynil	0.1
Bupirimate	0.1
Buprofezin	0.1
Butachlor	0.1
Butylate	0.1
Cadusafos	0.1
Captan	0.2
Carbaryl	0.1
Carbendazim	0.1
Carbofuran	0.1
Carbofuran 3-hydroxy	0.1
Carbophenothion	0.1
Carbophenothion-methyl	0.1
Carboxin	0.1

Analyte	LOQ (mg/kg)
Chlorantraniliprol	0.1
Chlordane, cis-	0.1
Chlordane, trans-	0.1
Chlorfenapyr	0.1
Chlorfenvinphos	0.1
Chlorobenzilate	0.1
Chlorpyrifos-ethyl	0.1
Chlorpyrifos-methyl	0.1
Chlorthal-dimethyl (Dacthal)	0.1
Clethodim	0.1
Clethodim sulfone	0.1
Clethodim sulfoxide	0.1
Clofentezine	0.1
Clomazone	0.1
Clopyralid	0.1
Clothianidin	0.1
Coumaphos	0.1
Crotoxyphos	0.1
Cyanofenphos	0.1
Cyanophos	0.1
Cyantraniliprole	0.1
Cyazofamid	0.1
Cyfluthrin	0.1
Cyhalothrin, lambda	0.1
Cymoxanil	0.1
Cypermethrin	0.1
Cyprodinil	0.1
DDD, o,p'-	0.1
DDD, p,p'-	0.1
DDE, o,p'-	0.1
DDE, p,p'-	0.1
DDT, o,p'-	0.1
DDT, p,p'-	0.1
DEET	0.1
Deltamethrin	0.1
Demeton-S	0.1
Demeton-s-methyl	0.1
Demeton-S-methyl-sulfone	0.1
Desmedipham	0.1
Diazinon	0.1
Dicamba	0.1
Dichlofenthion	0.1
Dichlofluandil	0.1
Dichlorbenzamid	0.1
Dichlorvos	0.1
Diclofop	0.1
Diclofop-methyl	0.1
Dicrotophos	0.1

Analyte	LOQ (mg/kg)
Dieldrin	0.1
Diethofencarb	0.1
Difenoconazol	0.1
Diflubenzuron	0.1
Diflufenzopyr	0.1
Dimethenamid	0.1
Dimethoat	0.1
Dimethomorph	0.1
Dinoseb	0.1
Dinotefuran	0.1
Dioxaathion	0.1
Diphenamid	0.1
Diphenylamine (DPA)	0.1
Disulfoton	0.1
Disulfoton-sulfone	0.1
Disulfoton-Sulfoxide	0.1
Diuron	0.1
DNOC	0.1
Edifenphos	0.1
Endosulfan (alpha isomer)	0.1
Endosulfan (beta isomer)	0.1
Endosulfan-sulfate	0.1
Endrin	0.1
EPN	0.1
EPTC	0.1
Esfenvalerate/Fenvalerate	0.1
Ethiofencarb	0.1
Ethion	0.1
Ethofumesate	0.1
Ethoprophos	0.1
Etofenprox	0.1
Etozazole	0.1
Etrimfos	0.1
Famoxadone	0.1
Famphur	0.1
Fenamiphos	0.1
Fenamiphos-Sulfone	0.1
Fenamiphos-Sulfoxide	0.1
Fenazaquin	0.1
Fenbuconazole	0.1
Fenhexamid	0.1
Fenobucarb	0.1
Fenoxycarb	0.1
Fenpropathrin	0.1
Fensulfothion	0.1
Fenthion	0.1
Fenuron	0.1
Fipronil	0.1

LOQ= Limit of Quantitation
mg/kg= milligram per kilogram (ppm)



12423 NE Whitaker Way
Portland, OR 97230
503-254-1794



Report Number: 23-000690/D018.R000
Report Date: 01/24/2023
ORELAP#: OR100028
Purchase Order:
Received: 01/17/23 14:16



**P2320 Multi-Residue Pesticide Profile
Cannabis**

Analyte	LOQ (mg/kg)
Flonicamid	0.1
Fluazifop	0.1
Fluazinam	0.1
Flucythrinate	0.1
Fludioxonil	0.1
Flufenacet	0.1
Flumioxazin	0.1
Flupicolide	0.1
Fluopyram	0.1
Fluoxastrobin	0.1
Flupyradifurone	0.1
Fluridone	0.1
Fluroxypyr	0.1
Fluthiacet-methyl	0.1
Flutolanil	0.1
Flutriafol	0.1
Fluvalinate	0.1
Fluxapyroxad	0.1
Fomesafen	0.1
Formetanate	0.1
Furathiocarb	0.1
Haloxypop	0.1
Heptachlor	0.1
Heptachlor epoxide	0.1
Hexaconazole	0.1
Hexazinone	0.1
Hexythiazox	0.1
Hydropene	0.1
Imazalil	0.1
Imazethapyr	0.1
Imidacloprid	0.1
Indaziflam	0.1
Indoxacarb	0.1
Iprobenfos	0.1
Iprodion	0.1
Isobenzan	0.1
Isufenphos	0.1
Isufenphos-methyl	0.1
Isufenphos-oxon	0.1
Isoprocab	0.1
Isoprothiolane	0.1
Isoproturon	0.1
Isoxaben	0.1
Kresoxim-methyl	0.1
Lindane	0.1
Linuron	0.1
Malaoxon	0.1
Malathion	0.1

Analyte	LOQ (mg/kg)
Mandipropamid	0.1
MCPA	0.1
MCPB	0.1
MCPP	0.1
Mecabarm	0.1
Mepanipyrim	0.1
Mesotrione	0.1
Metaxyl	0.1
Methamidophos	0.1
Methiocarb	0.1
Methiocarb sulfone	0.1
Methiocarb sulfoxide	0.1
Methomyl	0.1
Methoxyfenozide	0.1
Metolachlor	0.1
Metolcarb	0.1
Metrafenone	0.1
Mevinphos	0.1
MGK 264	0.1
Molinat	0.1
Monocrotophos	0.1
Monolinuron	0.1
Myclobutanil	0.1
Naled	0.1
Napropamide	0.1
Neburon	0.1
Norflurazon	0.1
Novaluron	0.1
Omethoat	0.1
Oryzalin	0.1
Oxadiazon	0.1
Oxadixyl	0.1
Oxamyl	0.1
Oxamyl-oxime	0.1
Oxychlorane	0.1
Oxydemeton-Methyl	0.1
Oxyfluorfen	0.1
Paclobutrazol	0.1
Paraoxon-ethyl	0.1
Paraoxon-methyl	0.1
Parathion-methyl	0.1
Penconazole	0.1
Pendimethalin	0.1
Penflufen	0.1
Penthiopyrad	0.1
Permethrin	0.1
Perthane	0.1
Phenmedipham	0.1

Analyte	LOQ (mg/kg)
Phenothrin	0.1
Phenthoate	0.1
Phorate	0.1
Phorate-Sulfone	0.1
Phorate-Sulfoxide	0.1
Phosalone	0.1
Phosmet	0.1
Phosphamidon	0.1
Phoxim	0.1
Pinoxaden	0.1
Piperonyl Butoxide	0.1
Pirimicarb	0.1
Pirimiphos-ethyl	0.1
Pirimiphos-methyl	0.1
Prallethrin	0.1
Prochloraz	0.1
Procymidone	0.1
Profenofos	0.1
Promecarb	0.1
Prometon	0.1
Prometryn	0.1
Propachlor	0.1
Propamocarb	0.1
Propanil	0.1
Propazine	0.1
Propetamophos	0.1
Propham	0.1
Propiconazole	0.1
Propoxur	0.1
Propyzamide	0.1
Prothiofos	0.1
Pyraclostrobin	0.1
Pyraflufen Ethyl	0.1
Pyrazophos	0.1
Pyrethrin	0.1
Pyridaben	0.1
Pyrimethanil	0.1
Pyriproxifen	0.1
Pyroxasulfone	0.1
Pyroxulam	0.1
Quinalphos	0.1
Quinclorac	0.1
Quinoxifen	0.1
Quintozene(PCNB)	0.2
Quizalofop	0.1
Resmethrin	0.1
Rotenone	0.1
Safufenacil	0.1

LOQ= Limit of Quantitation
mg/kg= milligram per kilogram (ppm)



12423 NE Whitaker Way
 Portland, OR 97230
 503-254-1794



Report Number: 23-000690/D018.R000
Report Date: 01/24/2023
ORELAP#: OR100028
Purchase Order:
Received: 01/17/23 14:16



**P2320 Multi-Residue Pesticide Profile
 Cannabis**

Analyte	LOQ (mg/kg)
Sebuthylazin	0.1
Sethoxydim	0.1
Simazine	0.1
Simetryn	0.1
Spinetoram J/L	0.1
Spinosyn A/D	0.1
Spirodiclofen	0.1
Spiromesifen	0.1
Spirotetramat	0.1
Spiroxamine	0.1
Sulfentrazone	0.1
Sulfotep	0.1
Sulfoxaflor	0.1
Sulprofos	0.1
Tebuconazole	0.1
Tebufenozide	0.1
Terbufos	0.1
Terbutylazine	0.1
Terbutryn	0.1
Tetrachlorvinphos	0.1
Tetraconazole	0.1
Tetramethrin	0.1
Thiabendazol	0.1
Thiabendazol-5-hydroxy	0.1
Thiacloprid	0.1
Thiamethoxam	0.1
Thiobencarb	0.1
Thiodicarb	0.1
Thiometon	0.1
Thiophanate-methyl	0.2
Tolfenpyrad	0.1
Tolyfluanid	0.1
Triadimefon	0.1
Triadimenol	0.1
Triazophos	0.1
Trifloxystrobin	0.1
Triflumizole	0.1
Triticonazole	0.1
Zoxamid	0.1

LOQ= Limit of Quantitation
 mg/kg= milligram per kilogram (ppm)



12423 NE Whitaker Way
 Portland, OR 97230
 503-254-1794

Report Number: 23-00690/D018.R000
Report Date: 01/24/2023
ORELAP#: OR100028
Purchase Order:
Received: 01/17/23 14:16



**Hemp / Cannabis Usable / Extract / Finished Products
 Chain of Custody Record**

Revision: 4.00 Control: CP028 Rev 02/24/2021 Eff: 03/04/2021
 ORELAP ID: OR100028

Company: <u>The Hemp Collect</u> Contact: <u>kyle@thehemppcollect.com</u> Street: <u>431 NW Handers St.</u> City: <u>Portland</u> State: <u>OR</u> Zip: <u>97209</u> <input checked="" type="checkbox"/> Email Results: <u>dropbox (IHL)</u> P#: <u>(503) 608164</u> <input type="checkbox"/> Fax Results: <u>()</u> Billing (if different): <u>joel@thehemppcollect.com</u>				Analysis Requested Pesticides - DR59 compounds Residual Solvents Moisture & Water Activity Terpene Micro: Yeast and Mold Micro: Coli and Total Coliform Heavy Metals Mycotoxins Other:										FO Numbers: _____ Project Number: _____ Project Name: _____ Custom Reporting: _____ Report to State - <input type="checkbox"/> METRC or <input type="checkbox"/> Other: _____ Turnaround time: <input checked="" type="checkbox"/> 5 Business Day Standard Turnaround <input type="checkbox"/> 3 Business Day Rush Turnaround* <input type="checkbox"/> 2 Business Day Rush Turnaround* <small>*Check for availability</small>		
Lab ID	Client Sample Identification	Date	Time	Pesticides - DR59 compounds	Residual Solvents	Moisture & Water Activity	Terpene	Micro: Yeast and Mold	Micro: Coli and Total Coliform	Heavy Metals	Mycotoxins	Other	Sample Type 1	Weight (Units)	Conversions/Units ID	
1	01LIR209_LB			X	X	X				X			C			
2	01LIR209_KC			X	X	X				X			C			
3	01LIR209_FV			X	X	X				X			C			
4	01LIR209_VW			X	X	X				X			C			
5	01LIR209_SB			X	X	X				X			C			
6	01LIR209_BO			X	X	X				X			C			
7	01LIR209_LT			X	X	X				X			C			
8	01LIR209_RC			X	X	X				X			C			
9	01LIR209_PJ			X	X	X				X			C			
10	01LIR209_CJ			X	X	X				X			C			
Requested By:		Date:	Time:	Received By:		Date:	Time:	Lab Use Only:								
Kyle Farook		1/17	11:00 A	<i>[Signature]</i>		1-17-23	1110	<input type="checkbox"/> shipped via: _____ or <input type="checkbox"/> client drop Evidence of cooling: <input type="checkbox"/> Yes <input type="checkbox"/> No - Temp (°C): <u>2.1+3</u> Sample in good condition: <input type="checkbox"/> Yes <input type="checkbox"/> No <input type="checkbox"/> Cash <input type="checkbox"/> Check <input type="checkbox"/> CC <input type="checkbox"/> Net: _____ Freight storage: _____								
<i>[Signature]</i>		1-17	1337	<i>[Signature]</i>		1/17/23	1416									

* - Sample Type Codes: Vegetation (V) ; Isolates (I) ; Extract/Concentrate (C) ; Tincture/Topical (T) ; Edible (E) ; Beverage (B)

Sample returned to Columbia Laboratories with testing requirements completed and approved for analysis in accordance with the current terms of service associated with the COC. By signing "Requested By" you are agreeing to these terms.

12423 NE Whitaker Way
 Portland, OR 97230

T: (503) 254-1794 / Fax: (503) 254-3452
 info@columbialaboratories.com

Page _____ of _____
 www.columbialaboratories.com



12423 NE Whitaker Way
Portland, OR 97230
503-254-1794

Report Number: 23-000690/D018.R000
Report Date: 01/24/2023
ORELAP#: OR100028
Purchase Order:
Received: 01/17/23 14:16



Hemp / Cannabis Usable / Extract / Finished Products
Chain of Custody Record

Revision: 4.00 Control: CPO25 Rev 02/24/2021 Eff: 05/04/2021
ORELAP ID: OR100028

Company: <u>The Hemp Collect</u> Contact: <u>kyle@thehempcollect.com</u> Street: <u>431 NW Flanders St</u> City: <u>Portland</u> State: <u>OR</u> Zip: <u>97209</u> <input checked="" type="checkbox"/> Email Results: <u>dropbox (IHC)</u> Fax: <input type="checkbox"/> (b1) 503154 <input type="checkbox"/> Fax Results: () Billing (if different): <u>joel@thehempcollect.com</u>				Analysis Requested Pentodes - Oil So compounds Pentode Methyl Ester - 179 compounds Potency Residual Solvents Moisture & Water Activity Terpenes Micro: Yeast and Molds Micro: E. Coli and Total Coliforms Heavy Metals Mycotoxins Other:										PO Number: _____ Project Number: _____ Project Name: _____ Custom Reporting: _____ Report to State - <input type="checkbox"/> METRC or <input type="checkbox"/> Other: Turnaround time: <input checked="" type="checkbox"/> 5 Business Day Standard Turnaround <input type="checkbox"/> 3 Business Day Rush Turnaround* <input type="checkbox"/> 2 Business Day Rush Turnaround* <small>*Check for availability</small> Sampled by: _____			
Lab ID	Client Sample Identification	Date	Time	Pentodes - Oil So compounds	Pentode Methyl Ester - 179 compounds	Potency	Residual Solvents	Moisture & Water Activity	Terpenes	Micro: Yeast and Molds	Micro: E. Coli and Total Coliforms	Heavy Metals	Mycotoxins	Other	Sample Type 1	Weight (units)	Comments/Metric ID
1	01LIR209_OGK			X	X	X					X						
2	01LIR209_Shaolin			X	X	X					X						
3	01LIR209_Japhy			X	X	X					X						
4	01LIR209_PP			X	X	X					X						
5	01LIR209_MT			X	X	X					X						
6	01LIR209_PK			X	X	X					X						
7	01LIR209_SP			X	X	X					X						
8	01LIR209_Sour G			X	X	X					X						
9	01LIR209_FG			X	X	X					X						
10	01LIR209_RGSP			X	X	X					X						
Relinquished by:		Date:	Time:	Accepted By:		Date:	Time:	Lab Use Only: <input type="checkbox"/> Shipped via _____ or <input type="checkbox"/> Client drop Evidence of cooling: <input type="checkbox"/> Yes <input type="checkbox"/> No - Temp (°C): <u>20.2</u> Sample in good condition: <input type="checkbox"/> Yes <input type="checkbox"/> No <input type="checkbox"/> Cash <input type="checkbox"/> Check <input type="checkbox"/> CC <input type="checkbox"/> Net: Freezing storage: _____									
Kyle Farook		1/17	11:00 A	<i>[Signature]</i>		1-17-23	11:0										
<i>[Signature]</i>		1-17	1335	<i>[Signature]</i>		01/17/23	1416										

1 - Sample Type Codes: Vegetation (V) ; Isolates (I) ; Extract/Concentrate (C) ; Tincture/Topical (T) ; Edible (E) ; Beverage (B)

Sample submitted to Columbia Laboratories with testing requirements constitute an agreement for services in accordance with the current terms of service associated with the CAC. By signing "Relinquished by" you are agreeing to these terms
 12423 NE Whitaker Way
 Portland, OR 97230
 P: (503) 254-1794 / Fax: (503) 254-1452
 info@columbiainstruments.com
 Page _____ of _____
 www.columbiainstruments.com



12423 NE Whitaker Way
 Portland, OR 97230
 503-254-1794

Report Number: 23-000690/D018.R000
Report Date: 01/24/2023
ORELAP#: OR100028
Purchase Order:
Received: 01/17/23 14:16



**Hemp / Cannabis Usable / Extract / Finished Products
 Chain of Custody Record**

Revision: 4.00 Control#: CF025 Rev 02/24/2021 Eff: 03/04/2021
 ORELAP#: OR100028

Company: <u>The Hemp Collect</u> Contact: <u>kyle@thehempcollect.com</u> Street: <u>431 NW Sanders St</u> City: <u>Portland</u> State: <u>OR</u> Zip: <u>97209</u> <input checked="" type="checkbox"/> Email Results: <u>dropbox (IHG)</u> Fx: <u>(503) 608164</u> <input type="checkbox"/> Fx Results: () Billing (if different): <u>joel@thehempcollect.com</u>				Analysis Requested Pesticides - OHS compounds Pesticide Multi-Residue - 379 compounds Potency Residual Solvents Moisture & Water Activity Terpenes Micro: Yeast and Mold Micro: E. Coli and Total Coliforms Heavy Metals Mycotoxins Other:										FO Number: _____ Project Number: _____ Project Name: _____ Client Reporting: _____ Report to State: <input type="checkbox"/> METRC or <input type="checkbox"/> Other _____ Turnaround time: <input checked="" type="checkbox"/> 1 Business Day Standard Turnaround <input type="checkbox"/> 1 Business Day Rush Turnaround* <input type="checkbox"/> 2 Business Day Rush Turnaround* <small>*Check for availability</small> Sampled by: _____			
Lab ID	Client Sample Identification	Date	Time	Pesticides - OHS compounds	Pesticide Multi-Residue - 379 compounds	Potency	Residual Solvents	Moisture & Water Activity	Terpenes	Micro: Yeast and Mold	Micro: E. Coli and Total Coliforms	Heavy Metals	Mycotoxins	Other	Sample Type 1	Weight (Units)	Comments/Metric ID
1	01LIR209_TK			X	X	X						X			C		
2	01LIR209_STs			X	X	X						X			C		
3	01LIR209_CS			X	X	X						X			C		
4	01LIR209_PB			X	X	X						X			C		
5																	
6																	
7																	
8																	
9																	
10																	
Relinquished by:		Date	Time	Received by:		Date	Time	Lab Use Only:									
Kyle Farqok		1/17	11:00 A			1/23	11:16	<input type="checkbox"/> Shipped Via: _____ or <input type="checkbox"/> Client drop Evidence of cooling: <input type="checkbox"/> Yes <input type="checkbox"/> No - Temp (°C): <u>2.1</u> Sample is good condition: <input type="checkbox"/> Yes <input type="checkbox"/> No <input type="checkbox"/> Cool <input type="checkbox"/> Check <input type="checkbox"/> OK <input type="checkbox"/> Min: Freezing storage: _____									
		1/17	1336			01/17/23	1416										

1 - Sample Type Codes: Vegetation [V] ; Isolates [I] ; Extract/Concentrate [C] ; Tincture/Topical [T] ; Dabble [D] ; Beverage [B]

Samples submitted to Columbia Laboratories with testing requirements constitute an agreement for analysis in accordance with the current state of Oregon regulations and the COC. By signing "Relinquished by" you are agreeing to these terms.

12423 NE Whitaker Way
 Portland, OR 97230

P: (503) 254-1794 | Fax: (503) 254-1452
 info@columbialaboratories.com

Page _____ of _____
 www.columbialaboratories.com



12423 NE Whitaker Way
Portland, OR 97230
503-254-1794



Report Number: 23-000690/D018.R000
Report Date: 01/24/2023
ORELAP#: OR100028
Purchase Order:
Received: 01/17/23 14:16

Revision: 1 Document ID: 7148
Legacy ID: Worksheet Validated 04/20/2021

Laboratory Quality Control Results

J AOAC 2015 V98-6 Batch ID: 2300599

Laboratory Control Sample									
Analyte	LCS	Result	Spike	Units	% Rec	Limits		Evaluation	Notes
CBDVA	2	0.104	0.100	%	104	80.0	- 120	Acceptable	
CBDV	2	0.110	0.106	%	104	80.0	- 120	Acceptable	
CBE	2	0.108	0.105	%	103	80.0	- 120	Acceptable	
CBDA	1	0.0963	0.096	%	100	90.0	- 110	Acceptable	
CBGA	1	0.0966	0.096	%	100	80.0	- 120	Acceptable	
CBG	1	0.100	0.099	%	102	80.0	- 120	Acceptable	
CBD	1	0.0970	0.097	%	99.7	90.0	- 110	Acceptable	
THCV	2	0.108	0.106	%	102	80.0	- 120	Acceptable	
d8THCV	2	0.109	0.103	%	106	80.0	- 120	Acceptable	
THCVA	2	0.103	0.099	%	104	80.0	- 120	Acceptable	
CBN	1	0.103	0.102	%	101	80.0	- 120	Acceptable	
exo-THC	2	0.101	0.097	%	104	80.0	- 120	Acceptable	
d9THC	1	0.112	0.105	%	107	90.0	- 110	Acceptable	
d8THC	1	0.0963	0.100	%	95.8	90.0	- 110	Acceptable	
CBL	2	0.109	0.104	%	105	80.0	- 120	Acceptable	
d10THC	1	0.0474	0.047	%	100	80.0	- 120	Acceptable	
CBC	2	0.107	0.104	%	103	80.0	- 120	Acceptable	
THCA	1	0.0946	0.095	%	99.6	90.0	- 110	Acceptable	
CBCA	2	0.105	0.103	%	102	80.0	- 120	Acceptable	
CBLA	2	0.109	0.105	%	104	80.0	- 120	Acceptable	
CBT	2	0.110	0.105	%	104	80.0	- 120	Acceptable	

Method Blank						
Analyte	Result	LOQ	Units	Limits	Evaluation	Notes
CBDVA	<LOQ	0.077	%	< 0.077	Acceptable	
CBDV	<LOQ	0.077	%	< 0.077	Acceptable	
CBE	<LOQ	0.077	%	< 0.077	Acceptable	
CBDA	<LOQ	0.077	%	< 0.077	Acceptable	
CBGA	<LOQ	0.077	%	< 0.077	Acceptable	
CBG	<LOQ	0.077	%	< 0.077	Acceptable	
CBD	<LOQ	0.077	%	< 0.077	Acceptable	
THCV	<LOQ	0.077	%	< 0.077	Acceptable	
d8THCV	<LOQ	0.077	%	< 0.077	Acceptable	
THCVA	<LOQ	0.077	%	< 0.077	Acceptable	
CBN	<LOQ	0.077	%	< 0.077	Acceptable	
exo-THC	<LOQ	0.077	%	< 0.077	Acceptable	
d9THC	<LOQ	0.077	%	< 0.077	Acceptable	
d8THC	<LOQ	0.077	%	< 0.077	Acceptable	
CBL	<LOQ	0.077	%	< 0.077	Acceptable	
d10THC	<LOQ	0.077	%	< 0.077	Acceptable	
CBC	<LOQ	0.077	%	< 0.077	Acceptable	
THCA	<LOQ	0.077	%	< 0.077	Acceptable	
CBCA	<LOQ	0.077	%	< 0.077	Acceptable	
CBLA	<LOQ	0.077	%	< 0.077	Acceptable	
CBT	<LOQ	0.077	%	< 0.077	Acceptable	

Abbreviations
ND - None Detected at or above MRL
RPD - Relative Percent Difference
LOQ - Limit of Quantitation

Units of Measure:
% - Percent



12423 NE Whitaker Way
 Portland, OR 97230
 503-254-1794



Report Number: 23-000690/D018.R000
Report Date: 01/24/2023
ORELAP#: OR100028
Purchase Order:
Received: 01/17/23 14:16

Revision: 1 Document ID: 7148
 Legacy ID: Worksheet Validated 04/20/2021

Laboratory Quality Control Results

J AOAC 2015 V98-6		Batch ID: 2300599						
Sample Duplicate		Sample ID: 23-000690-0001						
Analyte	Result	Org. Result	LOQ	Units	RPD	Limits	Evaluation	Notes
CBDVA	0.234	0.234	0.077	%	0.0872	< 20	Acceptable	
CBDV	<LOQ	<LOQ	0.077	%	NA	< 20	Acceptable	
CBE	<LOQ	<LOQ	0.077	%	NA	< 20	Acceptable	
CBDA	54.6	54.7	0.077	%	0.322	< 20	Acceptable	
CBGA	1.61	1.61	0.077	%	0.0614	< 20	Acceptable	
CBG	0.100	0.102	0.077	%	1.57	< 20	Acceptable	
CBD	0.888	0.922	0.077	%	3.66	< 20	Acceptable	
THCV	<LOQ	<LOQ	0.077	%	NA	< 20	Acceptable	
d8THCV	<LOQ	<LOQ	0.077	%	NA	< 20	Acceptable	
THCVA	<LOQ	<LOQ	0.077	%	NA	< 20	Acceptable	
CBN	<LOQ	<LOQ	0.077	%	NA	< 20	Acceptable	
exo-THC	<LOQ	<LOQ	0.077	%	NA	< 20	Acceptable	
d9THC	0.263	0.260	0.077	%	1.28	< 20	Acceptable	
d8THC	<LOQ	<LOQ	0.077	%	NA	< 20	Acceptable	
CBL	<LOQ	<LOQ	0.077	%	NA	< 20	Acceptable	
d10THC	<LOQ	<LOQ	0.077	%	NA	< 20	Acceptable	
CBC	<LOQ	<LOQ	0.077	%	NA	< 20	Acceptable	
THCA	3.97	3.97	0.077	%	0.128	< 20	Acceptable	
CBCA	2.66	2.63	0.077	%	1.28	< 20	Acceptable	
CBLA	<LOQ	<LOQ	0.077	%	NA	< 20	Acceptable	
CBT	<LOQ	<LOQ	0.077	%	NA	< 20	Acceptable	

Abbreviations

ND - None Detected at or above MRL
 RPD - Relative Percent Difference
 LOQ - Limit of Quantitation

Units of Measure:



12423 NE Whitaker Way
 Portland, OR 97230
 503-254-1794

Report Number: 23-000690/D018.R000
 Report Date: 01/24/2023
 ORELAP#: OR100028
 Purchase Order:
 Received: 01/17/23 14:16



Revision: 2 Document ID: 7087
 Legacy ID: CFL-E33Effective:

Laboratory Quality Control Results

Residual Solvents				Batch ID: 2300683					
Method Blank				Laboratory Control Sample					
Analyte	Result	LOQ	Notes	Result	Spike	Units	% Rec	Limits	Notes
Propane	ND	< 200		562	572	µg/g	98.3	60 - 120	
Isobutane	ND	< 200		667	731	µg/g	91.2	60 - 120	
Butane	ND	< 200		656	731	µg/g	89.7	60 - 120	
2,2-Dimethylpropane	ND	< 200		876	936	µg/g	93.6	60 - 120	
Methanol	ND	< 200		1630	1620	µg/g	100.6	60 - 120	
Ethylene Oxide	ND	< 30		52.3	56.2	µg/g	93.1	60 - 120	
2-Methylbutane	ND	< 200		1460	1610	µg/g	90.7	60 - 120	
Pentane	ND	< 200		1470	1600	µg/g	91.9	60 - 120	
Ethanol	ND	< 200		1270	1610	µg/g	78.9	70 - 130	
Ethyl Ether	ND	< 200		1490	1630	µg/g	91.4	60 - 120	
2,2-Dimethylbutane	ND	< 30		167	171	µg/g	97.7	60 - 120	
Acetone	ND	< 200		1560	1630	µg/g	95.7	60 - 120	
2-Propanol	ND	< 200		1630	1620	µg/g	100.6	60 - 120	
Ethyl Formate	ND	< 500		1490	1670	µg/g	89.2	70 - 130	
Acetonitrile	ND	< 100		477	498	µg/g	95.8	60 - 120	
Methyl Acetate	ND	< 500		1590	1730	µg/g	91.9	70 - 130	
2,3-Dimethylbutane	ND	< 30		159	171	µg/g	93.0	60 - 120	
Dichloromethane	ND	< 60		462	483	µg/g	95.7	60 - 120	
2-Methylpentane	ND	< 30		157	168	µg/g	93.5	60 - 120	
MTBE	ND	< 500		1450	1650	µg/g	87.9	70 - 130	
3-Methylpentane	ND	< 30		142	167	µg/g	85.0	60 - 120	
Hexane	ND	< 30		215	182	µg/g	118.1	60 - 120	
1-Propanol	ND	< 500		1370	1620	µg/g	84.6	70 - 130	
Methylethylketone	ND	< 500		1540	1620	µg/g	95.1	70 - 130	
Ethyl acetate	ND	< 200		1610	1610	µg/g	100.0	60 - 120	
2-Butanol	ND	< 200		1570	1600	µg/g	98.1	60 - 120	
Tetrahydrofuran	ND	< 100		412	483	µg/g	85.3	60 - 120	
Cyclohexane	ND	< 200		1690	1610	µg/g	105.0	60 - 120	
2-methyl-1-propanol	ND	< 500		1200	1620	µg/g	74.1	70 - 130	
Benzene	ND	< 1		4.47	5.02	µg/g	89.0	60 - 120	
Isopropyl Acetate	ND	< 200		1620	1620	µg/g	100.0	60 - 120	
Heptane	ND	< 200		1760	1610	µg/g	109.3	60 - 120	
1-Butanol	ND	< 500		1030	1630	µg/g	63.2	70 - 130	Q6
Propyl Acetate	ND	< 500		1330	1610	µg/g	82.6	70 - 130	
1,4-Dioxane	ND	< 100		432	491	µg/g	88.0	60 - 120	
2-Ethoxyethanol	ND	< 30		126	181	µg/g	69.6	60 - 120	
Methylisobutylketone	ND	< 500		1350	1620	µg/g	95.7	70 - 130	
3-Methyl-1-butanol	ND	< 500		1370	1630	µg/g	84.0	70 - 130	
Ethylene Glycol	ND	< 200		533	484	µg/g	110.1	60 - 120	
Toluene	ND	< 100		435	485	µg/g	89.7	60 - 120	
Isobutyl Acetate	ND	< 500		1540	1630	µg/g	94.5	70 - 130	
1-Pentanol	ND	< 500		1260	1620	µg/g	77.8	70 - 130	
Butyl Acetate	ND	< 500		1400	1620	µg/g	86.4	70 - 130	
Ethylbenzene	ND	< 200		942	969	µg/g	97.2	60 - 120	
m,p-Xylene	ND	< 200		957	994	µg/g	96.3	60 - 120	
o-Xylene	ND	< 200		883	967	µg/g	91.3	60 - 120	
Cumene	ND	< 30		131	171	µg/g	76.6	60 - 120	
Anisole	ND	< 500		1060	1630	µg/g	65.0	70 - 130	Q6
DMSO	ND	< 500		1650	1680	µg/g	98.2	70 - 130	
1,2-dimethoxyethane	ND	< 50		152	169	µg/g	89.9	70 - 130	
Triethylamine	ND	< 500		1510	1630	µg/g	92.6	70 - 130	
N,N-dimethylformamide	ND	< 150		422	482	µg/g	87.6	70 - 130	
N,N-dimethylacetamide	ND	< 150		376	510	µg/g	73.7	70 - 130	
Pyridine	ND	< 50		190	203	µg/g	93.6	70 - 130	
Sulfolane	ND	< 50		111	172	µg/g	64.5	70 - 130	Q6



12423 NE Whitaker Way
Portland, OR 97230
503-254-1794



Report Number: 23-000690/D018.R000
Report Date: 01/24/2023
ORELAP#: OR100028
Purchase Order:
Received: 01/17/23 14:16

Revision: 2 Document ID: 7087
Legacy ID: CFL-E33Effective:

QC - Sample Duplicate		Sample ID: 23-000399-0001						
Analyte	Result	Org. Result	LOQ	Units	RPD	Limits	Accept/Fail	Notes
Propane	ND	ND	200	µg/g	0.0	< 20	Acceptable	
Isobutane	ND	ND	200	µg/g	0.0	< 20	Acceptable	
Butane	ND	ND	200	µg/g	0.0	< 20	Acceptable	
2,2-Dimethylpropane	ND	ND	200	µg/g	0.0	< 20	Acceptable	
Methanol	ND	ND	200	µg/g	0.0	< 20	Acceptable	
Ethylene Oxide	ND	ND	30	µg/g	0.0	< 20	Acceptable	
2-Methylbutane	ND	ND	200	µg/g	0.0	< 20	Acceptable	
Pentane	ND	ND	200	µg/g	0.0	< 20	Acceptable	
Ethanol	529	537	200	µg/g	1.5	< 20	Acceptable	
Ethyl Ether	ND	ND	200	µg/g	0.0	< 20	Acceptable	
2,2-Dimethylbutane	ND	ND	30	µg/g	0.0	< 20	Acceptable	
Acetone	ND	ND	200	µg/g	0.0	< 20	Acceptable	
2-Propanol	ND	ND	200	µg/g	0.0	< 20	Acceptable	
Ethyl Formate	ND	ND	500	µg/g	0.0	< 20	Acceptable	
Acetonitrile	ND	ND	100	µg/g	0.0	< 20	Acceptable	
Methyl Acetate	ND	ND	500	µg/g	0.0	< 20	Acceptable	
2,3-Dimethylbutane	ND	ND	30	µg/g	0.0	< 20	Acceptable	
Dichloromethane	ND	ND	60	µg/g	0.0	< 20	Acceptable	
2-Methylpentane	ND	ND	30	µg/g	0.0	< 20	Acceptable	
MTBE	ND	ND	500	µg/g	0.0	< 20	Acceptable	
3-Methylpentane	ND	ND	30	µg/g	0.0	< 20	Acceptable	
Hexane	ND	ND	30	µg/g	0.0	< 20	Acceptable	
1-Propanol	ND	ND	500	µg/g	0.0	< 20	Acceptable	
Methyl ethyl ketone	ND	ND	500	µg/g	0.0	< 20	Acceptable	
Ethyl acetate	ND	ND	200	µg/g	0.0	< 20	Acceptable	
2-Butanol	ND	ND	200	µg/g	0.0	< 20	Acceptable	
Tetrahydrofuran	ND	ND	100	µg/g	0.0	< 20	Acceptable	
Cyclohexane	ND	ND	200	µg/g	0.0	< 20	Acceptable	
2-methyl-1-propanol	ND	ND	500	µg/g	0.0	< 20	Acceptable	
Benzene	ND	ND	1	µg/g	0.0	< 20	Acceptable	
Isopropyl Acetate	ND	ND	200	µg/g	0.0	< 20	Acceptable	
Heptane	ND	ND	200	µg/g	0.0	< 20	Acceptable	
1-Butanol	ND	ND	500	µg/g	0.0	< 20	Acceptable	
Propyl Acetate	ND	ND	500	µg/g	0.0	< 20	Acceptable	
1,4-Dioxane	ND	ND	100	µg/g	0.0	< 20	Acceptable	
2-Ethoxyethanol	ND	ND	30	µg/g	0.0	< 20	Acceptable	
Methylisobutylketone	ND	ND	500	µg/g	0.0	< 20	Acceptable	
3-Methyl-1-butanol	ND	ND	500	µg/g	0.0	< 20	Acceptable	
Ethylene Glycol	ND	ND	200	µg/g	0.0	< 20	Acceptable	
Toluene	ND	ND	100	µg/g	0.0	< 20	Acceptable	
Isobutyl Acetate	ND	ND	500	µg/g	0.0	< 20	Acceptable	
1-Pentanol	ND	ND	500	µg/g	0.0	< 20	Acceptable	
Butyl Acetate	ND	ND	500	µg/g	0.0	< 20	Acceptable	
Ethylbenzene	ND	ND	200	µg/g	0.0	< 20	Acceptable	
m,p-Xylene	ND	ND	200	µg/g	0.0	< 20	Acceptable	
o-Xylene	ND	ND	200	µg/g	0.0	< 20	Acceptable	
Cumene	ND	ND	30	µg/g	0.0	< 20	Acceptable	
Anisole	ND	ND	500	µg/g	0.0	< 20	Acceptable	
DMSO	ND	ND	500	µg/g	0.0	< 20	Acceptable	
1,2-dimethoxyethane	ND	ND	50	µg/g	0.0	< 20	Acceptable	
Triethylamine	ND	ND	500	µg/g	0.0	< 20	Acceptable	
N,N-dimethylformamide	ND	ND	150	µg/g	0.0	< 20	Acceptable	
N,N-dimethylacetamide	ND	ND	150	µg/g	0.0	< 20	Acceptable	
Pyridine	ND	ND	50	µg/g	0.0	< 20	Acceptable	
Sulfolane	ND	ND	50	µg/g	0.0	< 20	Acceptable	

Abbreviations

ND - None Detected at or above MRL
RPD - Relative Percent Difference
LOQ - Limit of Quantitation
Q6 - Quality control outside QC limits. Data acceptable based on remaining QC.

Units of Measure:

µg/g - Microgram per gram or ppm



12423 NE Whitaker Way
Portland, OR 97230
503-254-1794



Report Number: 23-000690/D018.R000
Report Date: 01/24/2023
ORELAP#: OR100028
Purchase Order:
Received: 01/17/23 14:16





Explanation of QC Flag Comments:

Code	Explanation
Q	Matrix interferences affecting spike or surrogate recoveries.
Q1	Quality control result biased high. Only non-detect samples reported.
Q2	Quality control outside QC limits. Data considered estimate.
Q3	Sample concentration greater than four times the amount spiked.
Q4	Non-homogenous sample matrix, affecting RPD result and/or % recoveries.
Q5	Spike results above calibration curve.
Q6	Quality control outside QC limits. Data acceptable based on remaining QC.
R	Relative percent difference (RPD) outside control limit.
R1	RPD non-calculable, as sample or duplicate results are less than five times the LOQ.
R2	Sample replicates RPD non-calculable, as only one replicate is within the analytical range.
LOQ1	Quantitation level raised due to low sample volume and/or dilution.
LOQ2	Quantitation level raised due to matrix interference.
B	Analyte detected in method blank, but not in associated samples.
B1	The sample concentration is greater than 5 times the blank concentration.
B2	The sample concentration is less than 5 times the blank concentration.