



12423 NE Whitaker Way
 Portland, OR 97230
 503-254-1794



Report Number: 22-006171/D006.R000
Report Date: 06/06/2022
ORELAP#: OR100028
Purchase Order:
Received: 05/26/22 15:42

Customer: IHC LLC
Product identity: Lemon Meringue Indoor FLT
Client/Metric ID: .
Laboratory ID: 22-006171-0005

Summary

Potency:

Analyte	Result (%)		
CBD-A	9.78		
CBC-A†	0.456		
THC-A	0.394		
CBD	0.148		
CBG-A†	0.124		
CBDV-A†	0.0546		
			CBD-Total 8.73%
			THC-Total 0.346%
			(Reported in percent of total sample)

Terpenes:

Analyte	Percent by weight	Percent of Total	Analyte	Percent by weight	Percent of Total
β-Caryophyllene†	0.131	29.11%	Humulene†	0.0802	17.82%
Terpinolene†	0.0680	15.11%	farnesene†	0.0596	13.24%
β-Myrcene†	0.0415	9.22%	(-)-Guaiol†	0.0381	8.47%
α-Bisabolol†	0.0315	7.00%	Total Terpenes†	0.450	100.00%



12423 NE Whitaker Way
 Portland, OR 97230
 503-254-1794



Report Number: 22-006171/D006.R000
Report Date: 06/06/2022
ORELAP#: OR100028
Purchase Order:
Received: 05/26/22 15:42

Customer: IHC LLC
 825 NW 16th Ave
 Portland Oregon 97209
 United States of America (USA)

Product identity: Lemon Meringe Indoor FLT

Client/Metric ID: .

Sample Date:

Laboratory ID: 22-006171-0005

Evidence of Cooling: No

Temp: 27.4 °C

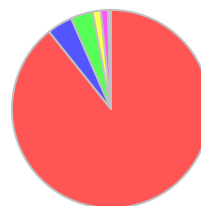
Relinquished by: Client



**THE HEMP
 COLLECT**

Sample Results

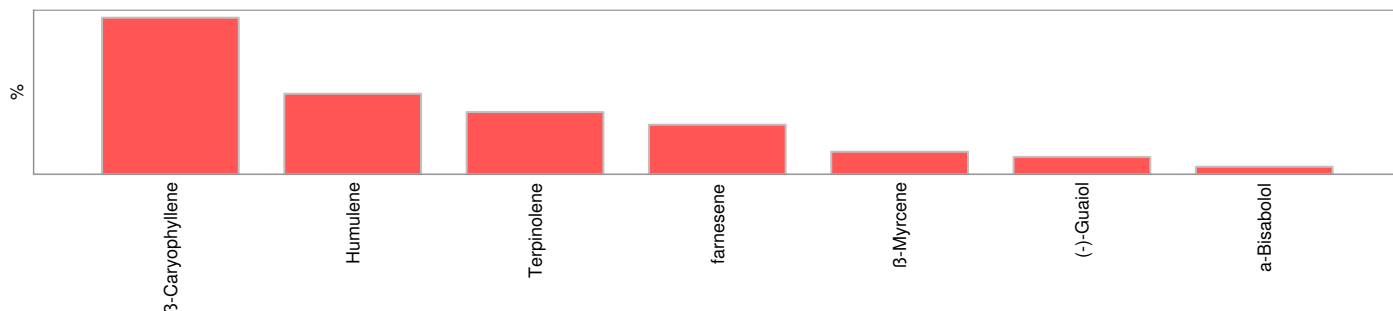
Potency	Method J AOAC 2015 V98-6 (mod)		Units %	Batch: 2204681	Analyze: 6/2/22 11:17:00 AM
Analyte	As Received	Dry weight	LOQ	Notes	
CBC	< LOQ		0.0297		
CBC-A†	0.456		0.0297		
CBC-Total†	0.400		0.0557		
CBD	0.148		0.0297		
CBD-A	9.78		0.297		
CBD-Total	8.73		0.290		
CBDV†	< LOQ		0.0297		
CBDV-A†	0.0546		0.0297		
CBDV-Total†	< LOQ		0.0554		
CBE†	< LOQ		0.0297		
CBG†	< LOQ		0.0297		
CBG-A†	0.124		0.0297		
CBG-Total	0.109		0.0554		
CBL†	< LOQ		0.0297		
CBL-A†	< LOQ		0.0297		
CBL-Total†	< LOQ		0.0557		
CBN	< LOQ		0.0297		
CBT†	< LOQ		0.0297		
Δ8-THC	< LOQ		0.0297		
Δ8-THCV	< LOQ		0.0297		
Δ9-THC	< LOQ		0.0297		
exo-THC	< LOQ		0.0297		
THC-A	0.394		0.0297		
THC-Total	0.346		0.0557		
THCV†	< LOQ		0.0297		
THCV-A†	< LOQ		0.0297		
THCV-Total†	< LOQ		0.0554		
Total Cannabinoids†	11.0				



- CBD-A
- CBC-A
- THC-A
- CBD
- CBG-A
- CBDV-A



Terpenes				Method J AOAC 2015 V98-6	Units %	Batch 2204674	Analyze 06/01/22 05:08 PM		
Analyte	Result	LOQ	% of Total	Notes	Analyte	Result	LOQ	% of Total	Notes
β-Caryophyllene†	0.131	0.019	29.111%		Humulene†	0.0802	0.019	17.8222%	
Terpinolene†	0.0680	0.019	15.1111%		farnesene†	0.0596	0.019	13.2444%	
β-Myrcene†	0.0415	0.019	9.2222%		(-)-Guaiol†	0.0381	0.019	8.4667%	
α-Bisabolol†	0.0315	0.019	7.0000%		Linalool†	< LOQ	0.019	0.00%	
(R)-(+)-Limonene†	< LOQ	0.019	0.00%		(-)-β-Pinene†	< LOQ	0.019	0.00%	
(-)-caryophyllene oxide†	< LOQ	0.019	0.00%		(±)-trans-Nerolidol†	< LOQ	0.019	0.00%	
Geraniol†	< LOQ	0.019	0.00%		α-phellandrene†	< LOQ	0.019	0.00%	
(-)-α-Terpineol†	< LOQ	0.019	0.00%		p-Cymene†	< LOQ	0.019	0.00%	
α-pinene†	< LOQ	0.019	0.00%		nerol†	< LOQ	0.019	0.00%	
α-Terpinene†	< LOQ	0.019	0.00%		(+)-fenchol†	< LOQ	0.019	0.00%	
γ-Terpinene†	< LOQ	0.019	0.00%		d-3-Carene†	< LOQ	0.019	0.00%	
(+)-Pulegone†	< LOQ	0.019	0.00%		Geranyl acetate†	< LOQ	0.019	0.00%	
(±)-Camphor†	< LOQ	0.019	0.00%		Menthol†	< LOQ	0.019	0.00%	
Eucalyptol†	< LOQ	0.019	0.00%		Camphene†	< LOQ	0.019	0.00%	
(+)-Borneol†	< LOQ	0.019	0.00%		(-)-Isopulegol†	< LOQ	0.019	0.00%	
(+)-Cedrol†	< LOQ	0.019	0.00%		(±)-cis-Nerolidol†	< LOQ	0.019	0.00%	
(±)-fenchone†	< LOQ	0.019	0.00%		α-cedrene†	< LOQ	0.019	0.00%	
cis-β-Ocimene†	< LOQ	0.006	0.00%		Isoborneol†	< LOQ	0.019	0.00%	
Sabinene†	< LOQ	0.019	0.00%		Sabinene hydrate†	< LOQ	0.019	0.00%	
trans-β-Ocimene†	< LOQ	0.013	0.00%		valencene†	< LOQ	0.019	0.00%	
Total Terpenes	0.450								





12423 NE Whitaker Way
Portland, OR 97230
503-254-1794



Report Number: 22-006171/D006.R000
Report Date: 06/06/2022
ORELAP#: OR100028
Purchase Order:
Received: 05/26/22 15:42

These test results are representative of the individual sample selected and submitted by the client.

Abbreviations

Limits: Action Levels per OAR-333-007-0400, OAR-333-007-0210, OAR-333-007-0220, CCR title 16-division 42. BCC-section 5723

Limit(s) of Quantitation (LOQ): The minimum levels, concentrations, or quantities of a target variable (e.g., target analyte) that can be reported with a specified degree of confidence.

† = Analyte not NELAP accredited.

Units of Measure

% = Percentage of sample

% wt = $\mu\text{g/g}$ divided by 10,000

Approved Signatory

Derrick Tanner
General Manager



12423 NE Whitaker Way
Portland, OR 97230
503-254-1794



Report Number: 22-006171/D006.R000
Report Date: 06/06/2022
ORELAP#: OR100028
Purchase Order:
Received: 05/26/22 15:42



Hemp / Cannabis Usable / Extract / Finished Products

Chain of Custody Record

Revision: 4.00 Control#: CF023 Rev 02/24/2021 Eff: 03/04/2021

ORELAP ID: OR100028

Company: IHC Contact: Kyle Farook Street: 431 NW Flanders st. City: Portland State: OR Zip: 97209 <input type="checkbox"/> Email Results: dropbox Ph: (503) 6081664 <input type="checkbox"/> Fx Results: (____) Billing (if different): joel@thehempcollect.com				Analysis Requested <input type="checkbox"/> Pesticides - OR 59 compounds <input type="checkbox"/> Pesticide Multi-Residue - 379 compounds <input type="checkbox"/> Potency <input type="checkbox"/> Residual Solvents <input type="checkbox"/> Moisture & Water Activity <input type="checkbox"/> Terpenes <input type="checkbox"/> Micro: Yeast and Mold <input type="checkbox"/> Micro: E.Coli and Total Coliform <input type="checkbox"/> Heavy Metals <input type="checkbox"/> Mycotoxins <input type="checkbox"/> Other:										PO Number: _____ Project Number: _____ Project Name: _____ Custom Reporting: _____ Report to State - <input type="checkbox"/> METRC or <input type="checkbox"/> Other: _____ Turnaround time: <input checked="" type="checkbox"/> 5 Business Day Standard Turnaround <input type="checkbox"/> 3 Business Day Rush Turnaround* <input type="checkbox"/> 2 Business Day Rush Turnaround* <small>*Check for availability</small> Sampled by: _____				
Lab ID	Client Sample Identification	Date	Time	Pesticides - OR 59 compounds	Pesticide Multi-Residue - 379 compounds	Potency	Residual Solvents	Moisture & Water Activity	Terpenes	Micro: Yeast and Mold	Micro: E.Coli and Total Coliform	Heavy Metals	Mycotoxins	Other	Sample Type †	Weight (Units)	Comments/Metric ID	
1	D8 Vape - Runtz					X									C		-Sample #6- Report in mg_analyte per 3.6g unit serving size -Sample#8- HHC concentrate sample, test accordingly please.	
2	D8 Vape - Mango Dosi					X									C			
3	D8 Vape - Tangie Skunk					X									C			
4	D8 Vape - Sour Space Candy					X									C			
5	Lemon Meringe Indoor	FLT				X		X							V			
6	07GMY304					X									E			
7	Live CBD Sugar - STs					X									C			
8	13DST_052622					X									C			
9																		
10																		
Relinquished By:		Date	Time	Received By:			Date	Time	Lab Use Only:									
Kyle Farook		5/26	4:30	AC			5-26	15:42	<input type="checkbox"/> Shipped Via: _____ or <input checked="" type="checkbox"/> Client drop Evidence of cooling: <input type="checkbox"/> Yes <input checked="" type="checkbox"/> No - Temp (°C): 27.4 Sample in good condition: <input checked="" type="checkbox"/> Yes <input type="checkbox"/> No <input type="checkbox"/> Cash <input type="checkbox"/> Check <input type="checkbox"/> CC <input type="checkbox"/> Net: _____ Prelog storage: _____									

† - Sample Type Codes: Vegetation (V) ; Isolates (S) ; Extract/Concentrate (C) ; Tincture/Topical (T) ; Edible (E) ; Beverage (B)

Samples submitted to Columbia Laboratories with testing requirements constitute an agreement for services in accordance with the current terms of service associated with this COC. By signing "Relinquished by" you are agreeing to these terms
 12423 NE Whitaker Way
 Portland, OR 97230
 P: (503) 254-1794 | Fax: (503) 254-1452
 info@columbiaboratories.com
 Page _____ of _____
 www.columbiaboratories.com



12423 NE Whitaker Way
Portland, OR 97230
503-254-1794



Report Number: 22-006171/D006.R000
Report Date: 06/06/2022
ORELAP#: OR100028
Purchase Order:
Received: 05/26/22 15:42

Revision: 1 Document ID: 7086
Legacy ID: CFL-E57Worksheet Validated 11/04/2020

Terpenes Quality Control Results

Method Reference: EPA5035				Batch ID: 2204674					
Method Blank				Laboratory Control Sample					
Analyte	Result	LOQ	Notes	Result	LCS	Units	LCS% Rec	Limits	Notes
a-pinene	<LOQ	< 200		600	650	µg/g	92%	70 - 130	
Camphene	<LOQ	< 200		459	500	µg/g	92%	70 - 130	
Sabinene	<LOQ	< 200		631	650	µg/g	97%	70 - 130	
b-Pinene	<LOQ	< 200		632	650	µg/g	97%	70 - 130	
b-Myrcene	<LOQ	< 200		459	500	µg/g	92%	70 - 130	
a-phellandrene	<LOQ	< 200		409	500	µg/g	82%	70 - 130	
d-3-Carene	<LOQ	< 200		415	500	µg/g	83%	70 - 130	
a-Terpinene	<LOQ	< 200		584	650	µg/g	90%	70 - 130	
p-Cymene	<LOQ	< 200		443	500	µg/g	89%	70 - 130	
D-Limonene	<LOQ	< 200		631	650	µg/g	97%	70 - 130	
Eucalyptol	<LOQ	< 200		447	500	µg/g	89%	70 - 130	
b-cis-Cimene	<LOQ	< 67		120	167	µg/g	72%	70 - 130	
b-trans-Cimene	<LOQ	< 133		296	333	µg/g	89%	70 - 130	
g-Terpinene	<LOQ	< 200		632	650	µg/g	97%	70 - 130	
Sabinene Hydrate	<LOQ	< 200		627	650	µg/g	96%	70 - 130	
Terpinolene	<LOQ	< 200		631	650	µg/g	97%	70 - 130	
D-Fenchone	<LOQ	< 200		589	650	µg/g	91%	70 - 130	
Linalool	<LOQ	< 200		506	500	µg/g	101%	70 - 130	
Fenchol	<LOQ	< 200		666	650	µg/g	102%	70 - 130	
Camphor	<LOQ	< 200		448	500	µg/g	90%	70 - 130	
Isopulego	<LOQ	< 200		418	500	µg/g	84%	70 - 130	
Isoborneol	<LOQ	< 200		446	500	µg/g	89%	70 - 130	
Borneol	<LOQ	< 200		669	650	µg/g	103%	70 - 130	
DL-Menthol	<LOQ	< 200		446	500	µg/g	89%	70 - 130	
Terpineol	<LOQ	< 200		671	650	µg/g	103%	70 - 130	
Nerd	<LOQ	< 200		406	500	µg/g	81%	70 - 130	
Pulegone	<LOQ	< 200		687	650	µg/g	106%	70 - 130	
Cereniol	<LOQ	< 200		659	650	µg/g	101%	70 - 130	
Geranyl_Acdate	<LOQ	< 200		473	500	µg/g	95%	70 - 130	
a-Cedrene	<LOQ	< 200		705	650	µg/g	108%	70 - 130	
b-Caryophyllene	<LOQ	< 200		473	500	µg/g	95%	70 - 130	
a-Humulene	<LOQ	< 200		712	650	µg/g	110%	70 - 130	
Valene	<LOQ	< 200		485	500	µg/g	97%	70 - 130	
cis-Nerolidol	<LOQ	< 200		502	500	µg/g	100%	70 - 130	
a-Farnesene	<LOQ	< 200		521	500	µg/g	104%	70 - 130	
trans-Nerolidol	<LOQ	< 200		701	650	µg/g	108%	70 - 130	
Caryophyllene_Oxide	<LOQ	< 200		504	500	µg/g	101%	70 - 130	
Guaiol	<LOQ	< 200		712	650	µg/g	110%	70 - 130	
Cedrol	<LOQ	< 200		465	500	µg/g	93%	70 - 130	
a-Bisabolol	<LOQ	< 200		482	500	µg/g	96%	70 - 130	

Definitions

LOQ	Limit of Quantitation
LCS	Laboratory Control Sample
% REC	Percent Recovery



12423 NE Whitaker Way
 Portland, OR 97230
 503-254-1794



Report Number: 22-006171/D006.R000
Report Date: 06/06/2022
ORELAP#: OR100028
Purchase Order:
Received: 05/26/22 15:42

Revision: 1 Document ID: 7086
 Legacy ID: CFL-E57Worksheet Validated 11/04/2020

Terpenes Quality Control Results

Method Reference: EPA5035		Batch ID: 2204674					
Sample/ Sample Duplicate		Sample ID: 22-006171-0005					
Analyte	Result	Org. Result	LOQ	Units	% RPD	LIMIT	Notes
a-pinene	<LOQ	<LOQ	196	µg/g	0%	< 20	
Camphene	<LOQ	<LOQ	196	µg/g	0%	< 20	
Sabinene	<LOQ	<LOQ	196	µg/g	0%	< 20	
b-Pinene	<LOQ	<LOQ	196	µg/g	0%	< 20	
b-Myrcene	409	415	196	µg/g	1%	< 20	
a-phellandrene	<LOQ	<LOQ	196	µg/g	0%	< 20	
d-3-Carene	<LOQ	<LOQ	196	µg/g	0%	< 20	
a-Terpinene	<LOQ	<LOQ	196	µg/g	0%	< 20	
p-Cymene	<LOQ	<LOQ	196	µg/g	0%	< 20	
D-Limonene	<LOQ	<LOQ	196	µg/g	0%	< 20	
Eucalyptol	<LOQ	<LOQ	196	µg/g	0%	< 20	
b-cis-Cimene	<LOQ	<LOQ	65.5	µg/g	0%	< 20	
b-trans-Cimene	<LOQ	<LOQ	131	µg/g	0%	< 20	
g-Terpinene	<LOQ	<LOQ	196	µg/g	0%	< 20	
Sabinene Hydrate	<LOQ	<LOQ	196	µg/g	0%	< 20	
Terpinolene	674	680	196	µg/g	1%	< 20	
D-Fenchone	<LOQ	<LOQ	196	µg/g	0%	< 20	
Linalool	<LOQ	<LOQ	196	µg/g	0%	< 20	
Fenchol	<LOQ	<LOQ	196	µg/g	0%	< 20	
Camphor	<LOQ	<LOQ	196	µg/g	0%	< 20	
Isopulego	<LOQ	<LOQ	196	µg/g	0%	< 20	
Isoborneol	<LOQ	<LOQ	196	µg/g	0%	< 20	
Borneol	<LOQ	<LOQ	196	µg/g	0%	< 20	
DL-Menthhol	<LOQ	<LOQ	196	µg/g	0%	< 20	
Terpineol	<LOQ	<LOQ	196	µg/g	0%	< 20	
Nerd	<LOQ	<LOQ	196	µg/g	0%	< 20	
Pulegone	<LOQ	<LOQ	196	µg/g	0%	< 20	
Geraniol	<LOQ	<LOQ	196	µg/g	0%	< 20	
Geranyl Acetate	<LOQ	<LOQ	196	µg/g	0%	< 20	
a-Cedrene	<LOQ	<LOQ	196	µg/g	0%	< 20	
b-Caryophyllene	1310	1310	196	µg/g	0%	< 20	
a-Humulene	795	802	196	µg/g	1%	< 20	
Valnene	<LOQ	<LOQ	196	µg/g	0%	< 20	
cis-Nerolidol	<LOQ	<LOQ	196	µg/g	0%	< 20	
a-Farnesene	689	596	196	µg/g	14%	< 20	
trans-Nerolidol	<LOQ	<LOQ	196	µg/g	0%	< 20	
Caryophyllene Oxide	<LOQ	<LOQ	196	µg/g	0%	< 20	
Guaiol	382	381	196	µg/g	0%	< 20	
Cedrol	<LOQ	<LOQ	196	µg/g	0%	< 20	
a-Bisabolol	318	315	196	µg/g	1%	< 20	

Definitions

RPD Relative Percent Difference



12423 NE Whitaker Way
Portland, OR 97230
503-254-1794



Report Number: 22-006171/D006.R000
Report Date: 06/06/2022
ORELAP#: OR100028
Purchase Order:
Received: 05/26/22 15:42

Revision: 1 Document ID: 7148
Legacy ID: Worksheet Validated 04/20/2021

Laboratory Quality Control Results

JAOAC2015 V98-6 Batch ID: 2204681

Analyte	LCS	Result	Spike	Units	% Rec	Limits	Evaluation	Notes
CBDVA	1	0.0356	0.033	%	107	80.0 - 120	Acceptable	
CBDV	1	0.0364	0.033	%	109	80.0 - 120	Acceptable	
CBE	1	0.0322	0.033	%	96.6	80.0 - 120	Acceptable	
CBDA	1	0.0320	0.033	%	96.1	90.0 - 110	Acceptable	
CBGA	1	0.0309	0.033	%	92.7	80.0 - 120	Acceptable	
CBG	1	0.0313	0.033	%	93.8	80.0 - 120	Acceptable	
CBD	1	0.0365	0.033	%	110	90.0 - 110	Acceptable	
THCV	1	0.0340	0.033	%	102	80.0 - 120	Acceptable	
d8THCV	1	0.0348	0.033	%	104	80.0 - 120	Acceptable	
THCVA	1	0.0321	0.033	%	96.2	80.0 - 120	Acceptable	
CBN	1	0.0347	0.033	%	104	90.0 - 110	Acceptable	
exo-THC	1	0.0379	0.033	%	114	80.0 - 120	Acceptable	
d9THC	1	0.0353	0.033	%	106	90.0 - 110	Acceptable	
d8THC	1	0.0325	0.033	%	97.5	80.0 - 120	Acceptable	
CBL	1	0.0348	0.033	%	104	80.0 - 120	Acceptable	
CBC	1	0.0363	0.033	%	109	80.0 - 120	Acceptable	
THCA	1	0.0319	0.033	%	95.6	90.0 - 110	Acceptable	
CBCA	1	0.0336	0.033	%	101	80.0 - 120	Acceptable	
CBLA	1	0.0340	0.033	%	102	80.0 - 120	Acceptable	
CBT	1	0.0354	0.033	%	106	80.0 - 120	Acceptable	

Method Blank

Analyte	Result	LOQ	Units	Limits	Evaluation	Notes
CBDVA	<LOQ	0.03	%	< 0.03	Acceptable	
CBDV	<LOQ	0.03	%	< 0.03	Acceptable	
CBE	<LOQ	0.03	%	< 0.03	Acceptable	
CBDA	<LOQ	0.03	%	< 0.03	Acceptable	
CBGA	<LOQ	0.03	%	< 0.03	Acceptable	
CBG	<LOQ	0.03	%	< 0.03	Acceptable	
CBD	<LOQ	0.03	%	< 0.03	Acceptable	
THCV	<LOQ	0.03	%	< 0.03	Acceptable	
d8THCV	<LOQ	0.03	%	< 0.03	Acceptable	
THCVA	<LOQ	0.03	%	< 0.03	Acceptable	
CBN	<LOQ	0.03	%	< 0.03	Acceptable	
exo-THC	<LOQ	0.03	%	< 0.03	Acceptable	
d9THC	<LOQ	0.03	%	< 0.03	Acceptable	
d8THC	<LOQ	0.03	%	< 0.03	Acceptable	
CBL	<LOQ	0.03	%	< 0.03	Acceptable	
CBC	<LOQ	0.03	%	< 0.03	Acceptable	
THCA	<LOQ	0.03	%	< 0.03	Acceptable	
CBCA	<LOQ	0.03	%	< 0.03	Acceptable	
CBLA	<LOQ	0.03	%	< 0.03	Acceptable	
CBT	<LOQ	0.03	%	< 0.03	Acceptable	

Abbreviations

ND - None Detected at or above MRL
RPD - Relative Percent Difference
LOQ - Limit of Quantitation

Units of Measure:

% - Percent



12423 NE Whitaker Way
Portland, OR 97230
503-254-1794



Report Number: 22-006171/D006.R000
Report Date: 06/06/2022
ORELAP#: OR100028
Purchase Order:
Received: 05/26/22 15:42

Revision: 1 Document ID: 7148
Legacy ID: Worksheet Validated 04/20/2021

Laboratory Quality Control Results

JAOAC2015 V98-6		Batch ID: 2204681						
Sample Duplicate		Sample ID: 22-006229-0001						
Analyte	Result	Org. Result	LOQ	Units	RPD	Limits	Evaluation	Notes
CBDVA	0.0377	0.0369	0.03	%	2.13	< 20	Acceptable	
CBDV	<LOQ	<LOQ	0.03	%	NA	< 20	Acceptable	
CBE	<LOQ	<LOQ	0.03	%	NA	< 20	Acceptable	
CBD A	7.72	7.54	0.03	%	2.36	< 20	Acceptable	
CBGA	0.187	0.184	0.03	%	1.43	< 20	Acceptable	
CBG	0.0805	0.0794	0.03	%	1.41	< 20	Acceptable	
CBD	2.08	2.03	0.03	%	2.12	< 20	Acceptable	
THCV	<LOQ	<LOQ	0.03	%	NA	< 20	Acceptable	
d8THCV	<LOQ	<LOQ	0.03	%	NA	< 20	Acceptable	
THCVA	<LOQ	<LOQ	0.03	%	NA	< 20	Acceptable	
CBN	<LOQ	<LOQ	0.03	%	NA	< 20	Acceptable	
exo-THC	<LOQ	<LOQ	0.03	%	NA	< 20	Acceptable	
d9THC	0.161	0.160	0.03	%	0.385	< 20	Acceptable	
d8THC	<LOQ	<LOQ	0.03	%	NA	< 20	Acceptable	
CBL	<LOQ	<LOQ	0.03	%	NA	< 20	Acceptable	
CBC	0.108	0.107	0.03	%	1.68	< 20	Acceptable	
THCA	0.198	0.194	0.03	%	2.34	< 20	Acceptable	
CBCA	0.287	0.287	0.03	%	0.0897	< 20	Acceptable	
CBLA	<LOQ	<LOQ	0.03	%	NA	< 20	Acceptable	
CBT	<LOQ	<LOQ	0.03	%	NA	< 20	Acceptable	

Abbreviations

- ND - None Detected at or above MRL
- RPD - Relative Percent Difference
- LOQ - Limit of Quantitation

Units of Measure:



12423 NE Whitaker Way
Portland, OR 97230
503-254-1794



Report Number: 22-006171/D006.R000
Report Date: 06/06/2022
ORELAP#: OR100028
Purchase Order:
Received: 05/26/22 15:42





Explanation of QC Flag Comments:

Code	Explanation
Q	Matrix interferences affecting spike or surrogate recoveries.
Q1	Quality control result biased high. Only non-detect samples reported.
Q2	Quality control outside QC limits. Data considered estimate.
Q3	Sample concentration greater than four times the amount spiked.
Q4	Non-homogenous sample matrix, affecting RPD result and/or % recoveries.
Q5	Spike results above calibration curve.
Q6	Quality control outside QC limits. Data acceptable based on remaining QC.
R	Relative percent difference (RPD) outside control limit.
R1	RPD non-calculable, as sample or duplicate results are less than five times the LOQ.
R2	Sample replicates RPD non-calculable, as only one replicate is within the analytical range.
LOQ1	Quantitation level raised due to low sample volume and/or dilution.
LOQ2	Quantitation level raised due to matrix interference.
B	Analyte detected in method blank, but not in associated samples.
B1	The sample concentration is greater than 5 times the blank concentration.
B2	The sample concentration is less than 5 times the blank concentration.